

THE  
THE

WAY  
WAY

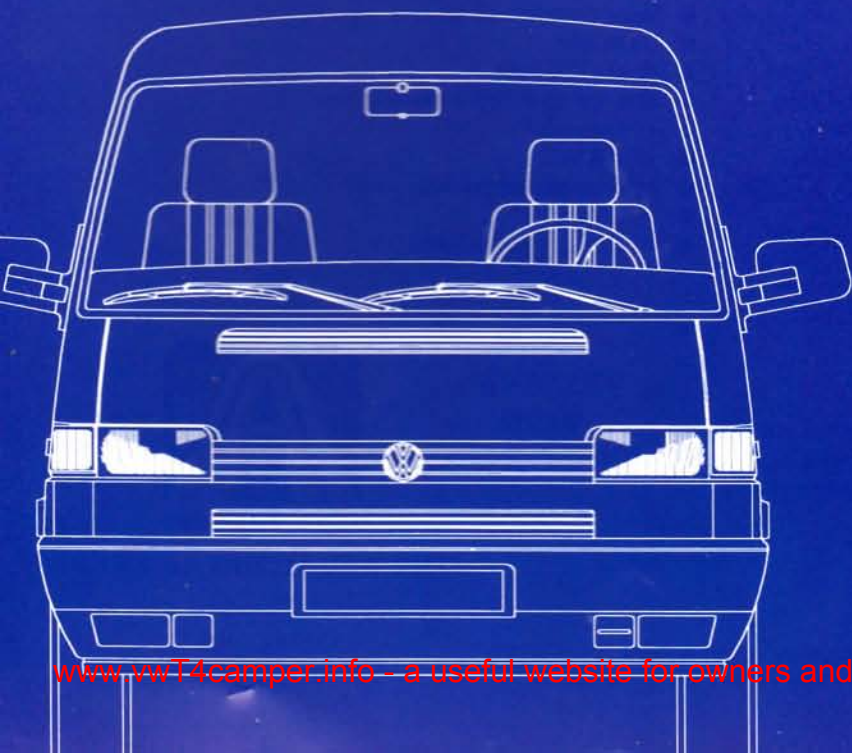
TO  
TO

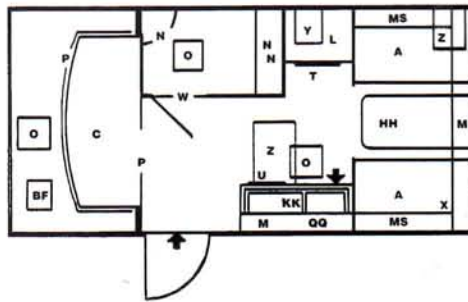
BREAK  
BREAK

FREE  
FREE



THE MERLIN





## MERLIN

### 1995 MERLIN FLOOR PLAN KEY

A	DINETTE/ DOUBLE BED	KK	COMBINATION 3 BURNER HOB & GRILL, SINK & DRAINER	QQ	CROCKERY LOCKER
B	BATTERY COMPARTMENT	L	WARDROBE	R	CUPBOARD
C	OVER CAB DOUBLE BED	M	WALL LOCKER	RR	DRAW UNIT
E	SINGLE BED/DAY SEAT	MS	SHELF	S	GAS BOTTLE LOCKER
F	INERTIA SEAT BELTS	N	VANITY UNIT	T	HEATER
GG	TABLE STORAGE UNIT	NN	PORTA POTTI	U	FRIDGE
H	FREE STANDING TABLE	O	ROOFLIGHT	W	SHOWER
HH	TABLE	P	DIVIDING CURTAIN	X	WATER HEATER
I	3 BURNER HOB & GRILL	Q	WINE LOCKER	Y	FRESHWATER TANK
J	SINK & DRAINER			Z	WASTEWATER TANK

Model	MERLIN
Base Vehicle	V.W.
No of Berths Designated Passenger Seats	4 / 1
Exterior Length mm (ins)	5410 (17' 9")
Overall Width mm (ins)	2150 (7' 1/2")
Overall Height mm (ins)	2720 (8'11 1/4")
Maximum Headroom mm (ins)	1936 (6'4 1/4")
Interior Width mm (ins)	2014 (6'7")
Ex Works Kerb Weight (WET) kgs (Cwt) DIE.	2004 (39.5)
Max Laden Weight (G.V.W.) kgs (Cwt) DIE.	2800 (55)
Max Payload Kgs (Cwt) DIE	796 (15.7)
Ex Works Kerb Weight (Wet) kgs (Cwt) PET.	2004 (39.5)
Max Laden Weight (G.V.W.) kgs (Cwt) PET.	2800 (55)
Max Payload kgs (Cwt) PET.	796 (15.7)
Front Axle M.A.W kgs (Cwt)	1430 (28.1)
Rear Axle M.A.W. kgs (Cwt)	1460 (28.7)
Bed Sizes	O/CAB DOUBLE 67" X 3'8 1/2" 1 X DOUBLE 67" X 4'6"
<b>Technical</b>	
Engine	Petrol 2.0 litre CAT 62kw (84bhp) @ 4300rpm Petrol 2.5 litre CAT 81kw (110bhp) @4500rpm Diesel 1.9 litre 45kw (61bhp) @ 3700rpm Diesel 2.4 litre 57kw (78bhp) @ 3700rpm
Transmission	Front wheel drive 5 speed manual 4 speed automatic
Brakes	Dual circuit servo assisted, discs front drums rear
Steering	Power steering, rack and pinion (maintenance free)
Full Capacity	Tank capacity 17.6 gals (80 litres)

\* Please add 30kg to Ex. Works weight for Automatic Gearbox.

Payload can vary subject to weight tolerances in materials used.

Ex Works Weight- Weight of vehicle with body, fitted with all electrical equipment and auxiliary equipment necessary for normal operation of the vehicle plus the weight of the following elements: coolant, fuel (tank filled to at least 90% of the capacity specified by the manufacture) spare wheels, fire extinguishers, standard spare parts, chocks, standard tool kit.

Max Laden Weight (GVW) - Manufacturer's total mass permitted to be carried.

### EXTERIOR

- VW chassis.
- Double glazed windows.
- 2 x 7kg gas locker.
- Rear spare wheel and tool locker.
- Front and Rear Marker Lights.
- GRP lutan link panel.
- Laminated construction of body and bulkheads.
- Insulated walls, floor and ceiling.
- Under floor waste water tank.
- Secondary battery housing and battery.
- Wheel trims.

### INTERIOR

- Traditional Autohomes quality furniture.
- Sprung upholstery (not lutan).
- Scatter cushions.
- Carpet to cab.
- Upholstered cab seats.
- Table and ladder storage.
- Enamel 3 burner hob and grill with matching sink and drainer.
- Glass lid to hob.
- 60 litre refrigerator.
- Carver GE2 water heater.
- Shower compartment with basin and vanity unit.
- Cassette toilet.
- Montana 1800 heater.
- Mains input and distribution panel with charger.
- 2 x 13amp socket.
- Slatted bed infill.
- Fresh water tank with push button gauge.
- Smoke alarm.
- Fire extinguisher and fire blanket.

VOLKSWAGEN  
BASED  
MOTOR CARAVANS



THE WAY TO BREAK FREE

Autohomes, Delves Lane, Consett,

Co. Durham DH8 7LG

Telephone: (01207) 591 017

Fax: (01207) 591 018